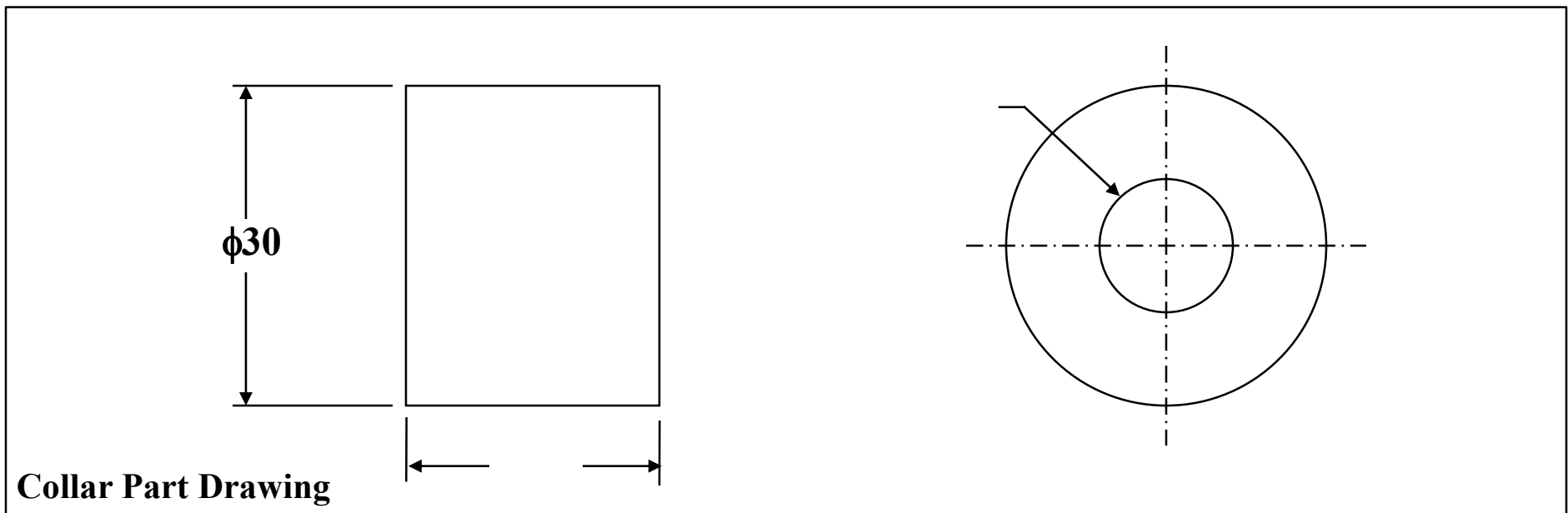
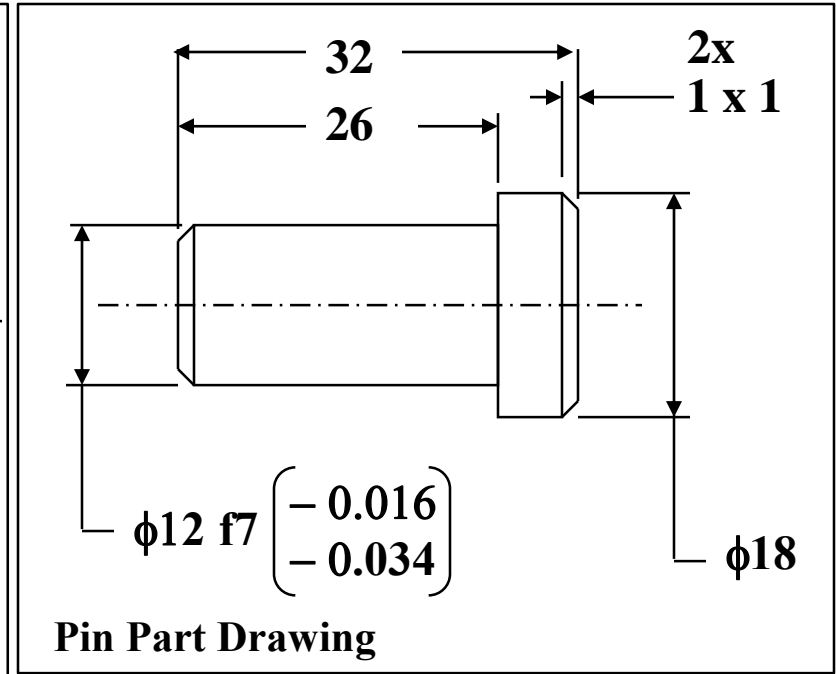
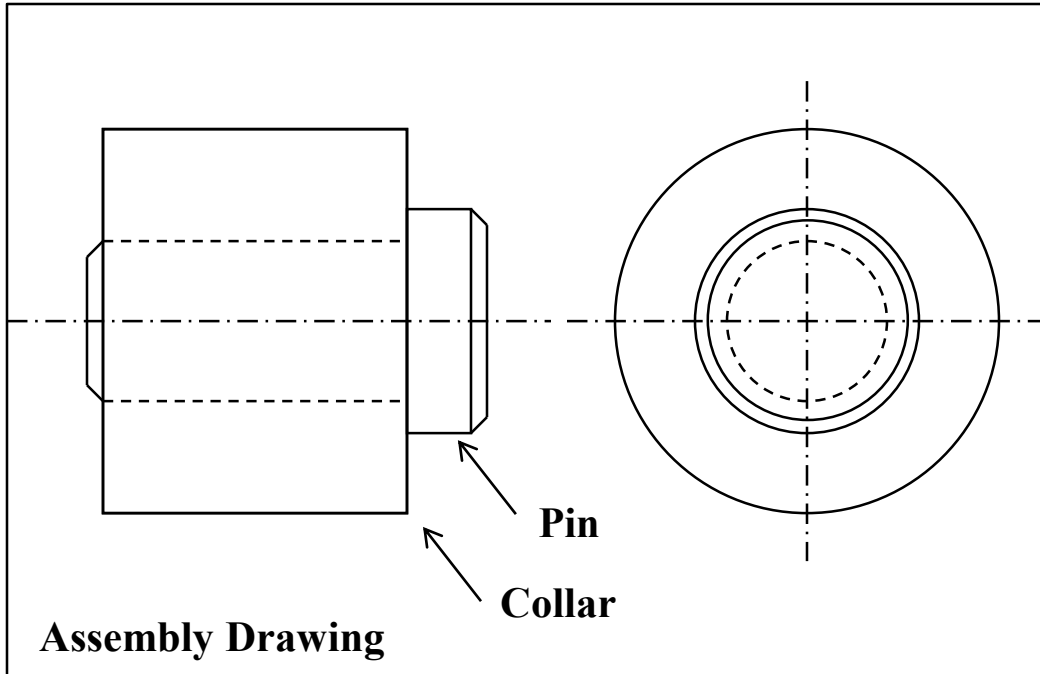


Lecture Class Assignment #8: Pin and Collar Assembly – Complete the Collar drawing assuming a ISO Close Running Fit between Pin and Collar and that the length of the collar requires a tolerance of +0, -0.125 (Use ISO bilateral format)

Name:
Section:



General tolerance +/- 0.25 unless otherwise stated ; All dimensions in mms