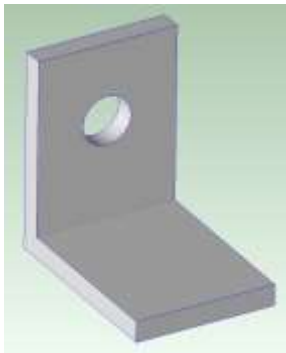


ME170 Lecture Class Assignment #14

Name:

Lab Section (AB#):

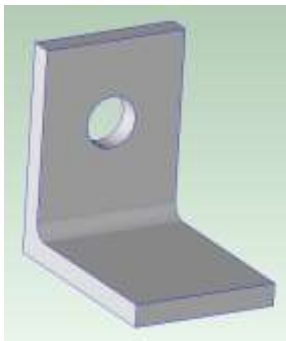


1. Machining from Rectangular Bar Stock:

What is the Material cost?

What is the Fully Burdened Cost?

What is the Investment Cost (hard tooling) ?

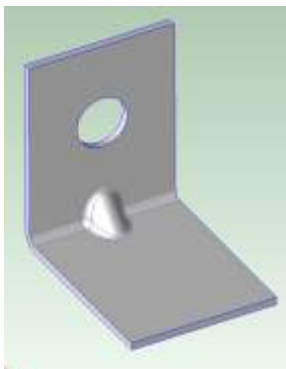


2. Machining from Angle Iron:

What is the Material cost?

What is the Fully Burdened Cost?

What is the Investment Cost (hard tooling)?



3. Sheet Metal:

What is the Material cost?

What is the Fully Burdened Cost?

Material Nesting - one part per strip:

Material Nesting – two parts mirrored per strip:

What is the Investment Cost (hard tooling)?



4. Injection Molding: for comparison (did this last class)

The Material cost: \$0.07

The Fully Burdened Cost (optimized number of cavities): \$0.13

The Investment Cost (hard tooling – optimized)? \$76,000