

AUTOMATED CHINESE TRADITIONAL CHIMES WITH SONG

By

Luting Lei

Siyi Li

Tianle Wu

Xiaoxiao Pan

Design document for ECE 445, Senior Design, Spring 2024

26 April 2024

Project No. 11

Contents

- 1. Introduction..... 1
 - 1.1 Problem 1
 - 1.2 Solution 1
 - 1.3 Visual Aid 1
 - 1.4 High-level requirements list 1
- 2. Design 2
 - 2.1 Block diagram 2
 - 2.2 Subsystem overview 2
 - 2.2.1 Melody Recognition and Generating System 2
 - 2.2.2 Electrical Control System 4
 - 2.2.3 Mechanical System 4
 - 2.3 Subsystem Requirements 5
 - 2.3.1 Melody Recognition and Generating System 5
 - 2.3.2 Electrical Control System 6
 - 2.3.3 Mechanical System 10
 - 2.4 Tolerance Analysis 13
- 3. Cost and schedule 14
 - 3.1 Cost analysis 14
 - 3.2 Schedule 14
- 4. Ethics and Safety 16
- References 17

1. Introduction

1.1 Problem

Few people play Chinese traditional Chimes, and they're often stuck in traditional music, which seems to be a barrier of traditional instruments. Additionally, the lack of research on blending modern music with Chinese traditional genres is another challenge. By addressing these issues, the project contributes to the inheritance of Chinese culture in a modern context and innovatively researches the possible music style transformation between model music and traditional Chinese music. However, the chimes we can find can't meet the requirement of being able to play, out of tune and too widely spaced.

1.2 Solution

The project aims to revive the melody played by smartphones in the Chinese traditional Chimes. We will first recognize a melody from a smartphone and generate the adapted melody for chimes, then transform the melody to signals, and then control a mechanical design to ring the chimes with the motor. We intend to transform the instruments that would have been used to strike the chimes and their control system to control the striking of cups filled with water. Replace chimes that produce different tones with cups containing different amounts of water. The following references to cups filled with water still use chimes.

1.3 Visual Aid

The project aims to revive the melody played by smartphones in the Chinese traditional Chimes. We will first recognize a melody from a smartphone and generate the adapted melody for chimes, then transform the melody to signals, and then control a mechanical design to ring the chimes with the motor. The diagram for visual aid is shown in Figure 1.

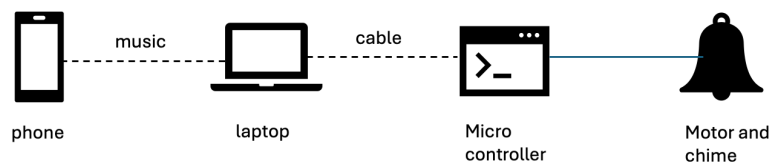


Figure 1 Visual aid

1.4 High-level requirements list

1. Generate an algorithm that can correctly recognize the melody from a smartphone (with noise). Apply the algorithm to adapt the recognized melody for chimes play.
2. Generating correct position and time signals and successfully controlling motor operation.
3. Make the adapted music pleasant and make the whole structure as simple as possible.
4. Achieve striking functionality through a structurally simple, efficient, and aesthetically pleasing design.

5. Ensure that the striking method produces a high-quality, crisp, and stable sound from the water cup.
6. Digital signals are converted into voltage signals and output through the microcontroller, and when the output pin is not sufficient to support one-to-one control, a logic circuit is used to realize one-to-many control.
7. Achieve auto-injection function, realization of automatic water injection to the target position.

2. Design

2.1 Block diagram

The block diagram of our design is shown in Figure 2.

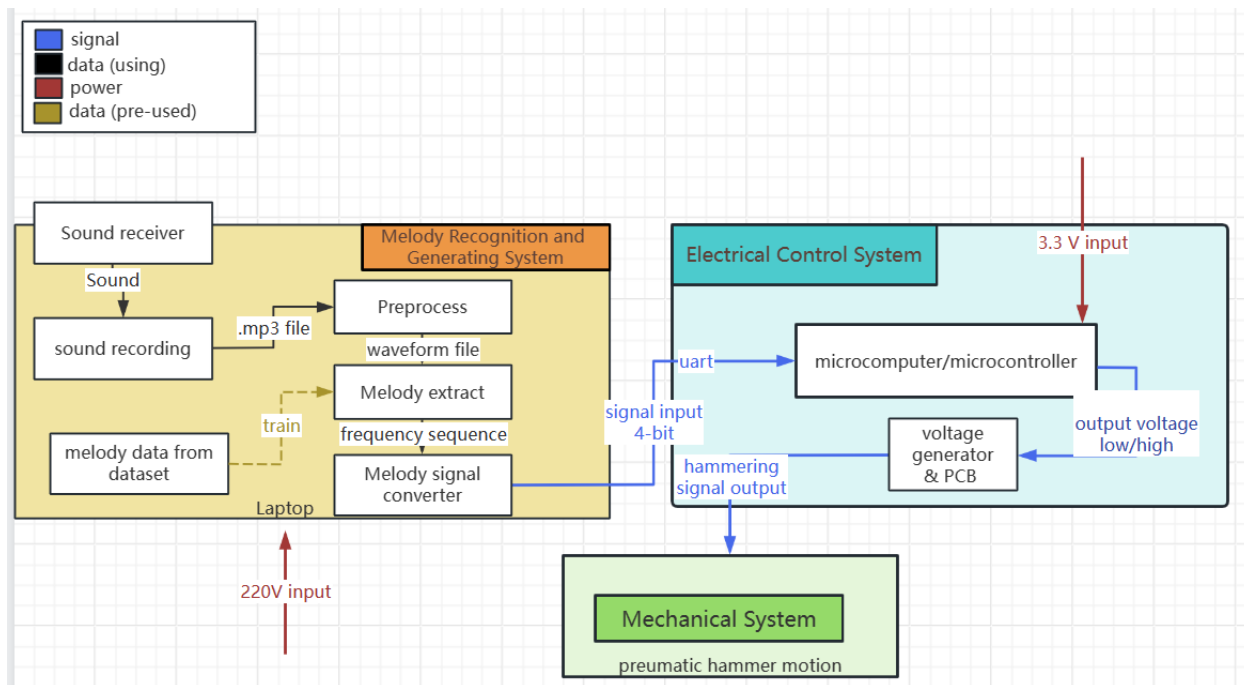


Figure 2 Block Diagram

2.2 Subsystem overview

2.2.1 Melody Recognition and Generating System

The model will be trained to automatically recognize the main melody from a period of sound played by the smartphone and adapt to Chinese traditional style for chimes.

The Subsystem has the following functions:

- a. **Sound Recording.** We will record a 30s long audio through our laptop sound receiver and save it as an audio file. This function serves as the start of the interaction of this project.
The recording parameters are set below:

```

CHUNK = 1024
FORMAT = pyaudio.paInt16
CHANNELS = 1
RATE = 44100

```

- b. Preprocess. Then, we will use python to preprocess the audio file, reducing noise and cutting off empty periods in the audio. We will detect the continuous period of audio with the average volume larger than 54dB as our detected song and cut off the unvoicing part.
- c. Melody Extract. We will identify the melody by extracting the frequency sequence. We will use a combination of signal processing method and data driven method. The process shows as figure below:

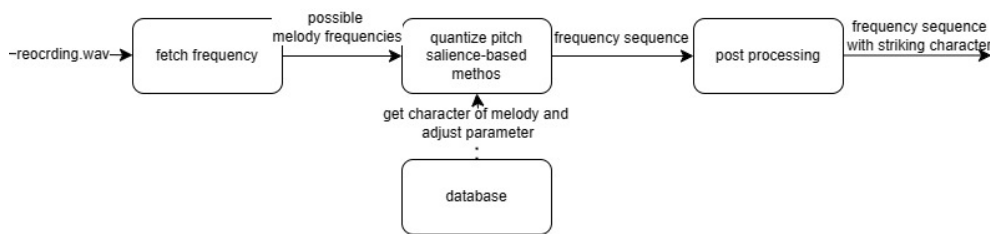


Figure 3 Procedure of melody extract

The melody extraction is a salience-based method. Firstly, we do frequency fetch. This step is to get the candidate melody frequency for each frame. We apply an STFT and keep frequencies with a magnitude larger than a threshold as the candidate frequencies. Then, we quantize the pitch. This process will determine which frequency or none of the frequencies in a certain frame should be detected. We generate several melody contours based on the frequency and magnitude continuity. We group frequencies with difference smaller than 50 cents into the same contour and cut the contours based on the valley of normalized amplitude in each contour. Then we select one contour based on multi-octave relation. We divide the contours into a group with multi-octave relation and a group without multi-octave relation. Contours with multi-octave relation should have at least 80% “temporal overlap with longest contour”. [4] Then in multi-octave relation group, we select the countour with a combination of largest salience and amplitude. The salience can be calculated as an average amplitude of adjacent time frames.

All the parameters of the above process are adjusted for a better performance of the following dataset.

Table 1 information of related public music recording dataset

Name	Sampling rate (in KHZ)	Pulse code modulation (in bit)	Genres	Duration (in seconds)
MIREX 2005	44.1	16	Rock, Pop, Jazz, Piano	20 - 30

Medley DB	44.1	16	Daisy, Jazz, Opera, MIDI, Pop	20
-----------	------	----	-------------------------------------	----

Finally we do a post processing. There will also be the detection of rhythm. Taking advantage of duration of each note, we consider the shortest ones as crotchet. Then find the average interval so that we obtain the standard length of crotchet. Setting the threshold of 1.5 times of crotchet duration and 2.5 times of that, we are also capable to find the length and location of minim and dotted minim. Finally, standardize the signal length in order to avoid the time jittering in manually performed song. Considering the storage of microcontrollers, each quarter note takes 10 clock cycles, and we change the frequency of performing notes while controlling the microcontroller so that it meets the rhythm requirement.

- d. Melody Signal Converter. Finally, the frequency sequence will be converted to the signal. With certain interval, pitch frequency, and strength, the information of notes could be proceeded to the microcontroller digitally at certain frequency. This function served as a connection between Melody Recognition and Generating subsystem and Electrical Control subsystem. The first two bits are for controlling, with "00" no hitting, "01" indicating the number of notes in the following harmonic, "10" containing the key to be stroke. If it is in "01" mode, the following 3 bits shows the number of notes to be performed together; if it is in "10" mode, the following 3 bits presents the key location to be played and the 2 bits after that contains the strength of hitting. Then they will be transmitted to the microcontroller with certain frequency by a USB cable. There will be 8 keys (3 bits) and 4 strengths (2 bits) in total.

2.2.2 Electrical Control System

We will also design a control circuit to transmit signals from the microcontroller to the mechanical part. There are 8 output pins with 3.3V- 5V output as logic "1" and 0V as logic "0", and the microcontroller is duty for processing the location data and control the voltage at each pin. The pin is connected to the gate of an NMOS, which operates as a switch to control the motor.

2.2.3 Mechanical System

A hammer structure hanging horizontally at the top of a series of chimes (cups) controlled by a motor. It will ring the corresponding chimes controlled by the electrical control system. The primary design is shown below:



Figure 4 Block Sketching of the Mechanical Part

The water will be placed in two parallel lines and the striking part will be arranged between the cups. The motor will serve as the base and control the worm gear (blue part in figure) to rotate. Each motor will control two sticks (green part in figure), which is fixed in position. We apply siphon effect with pipes to achieve the function of automatically filling the water to the right level.

2.3 Subsystem Requirements

2.3.1 Melody Recognition and Generating System

Table 2 Requirement and verification of melody recognition and generation system

Requirement	Verification	Verification Status
<ol style="list-style-type: none"> The environment for using our product should be in a quiet space and the song should be relatively loud. We define 54 db as the sound threshold, which means a sound louder than 54db will be considered as the song we want to identify. Considering the data we used to adjust our parameter, we also limited the song to a limited length of 30s. 	<p>Procedure:</p> <ol style="list-style-type: none"> Run firstly a program to test whether the audio is good after the audio is recorded. The program should detect the average volume of each time window, with a threshold of 54 dB. The window with an average volume larger than 54 dB will be considered as an audio part, while smaller than 54 dB will considered as an empty part. If the program detects the audio part with a length larger than 10s and smaller than 30s, then the audio is considered good. 	<ol style="list-style-type: none"> Y

The program successfully generates the right frequency sequence	Procedure: The control signal will be generated in particular frequency, especially a couple of times of the detected beat. If the signal showing there is a note appears periodically, it means the beats generation is successful.	2. Y
The program successfully generates the correct rhythm	Procedure: Comparing the generated durations between every two notes nearby with the original music, if they match with each other, the rhythm generation is successful.	3. Y
The program successfully generates the correct control code for microcontroller	Procedure: If the control code starting with "10" appears at the same location as that in frequency sequence, and there is always a control code starting with "01" leading it; the number of notes and note location match with the original song, the control code generation is successful. It can also be verified by inputting the control code sequence into the microcontroller directly and listen to the generated song.	4. Y
The chime generates correct notes which performs the regenerated song	Procedure: The melody performed by the chime could also be recorded, and then compare it with that performed by the phone in frequency domain with stft function.	5. Y

2.3.2 Electrical Control System

The system will transform the generated melody to location and time signals (for different pitches and rhythms) and build a microcontroller.

The plan is to use a microcontroller to convert the input signal (8-bit signal) into a switch to control the circuit, and to control the thyristor to realize the circuit on and off. By connecting twelve mechanical hammers to each of the twelve circuits, the signal input to the mechanical part of the conversion is realized by using controllable thyristors such as MOSFET or IGBT to control the on-off time of the circuit. The control voltage of the microcontroller is in the range of 3.3-5V, and the control voltage of the controllable thyristor is controlled by the output of the microcontroller.

The outside circuit will include several resistors to protect the whole circuit.

Table 3 Requirement and Verification of Electrical Control System

Requirement	Verification	Verification Status
<p>1. Processing the input signal and then getting the output voltage from the microcontroller system.</p> <p>2. Using the voltage signal, including the message of time and which pitch the machinal damp will strike, to control the machinal part.</p>	<p>To be specified, we plan to use the whole microcontroller system, including clock, LEDs, chips. (As figure 5 shown)</p> <p>We try to use Keil UVision4 to program the microcontroller, to implement this function. We use C language to program the microcontroller.</p> <p>We need first to get the input signal, which suppose to be 8 bits signal in the text file in json format. So we need to figure out how to identify text file using microcontroller, use CH340 chip to convert USB signal to the data that can be reconigized by the microcontroller, and then use C language to make state machine, getting output voltages from microcontroller and then sending them to control the motors.</p> <hr/> <p>For the outside circuit: Plan to use some MOSFET or IGBT, the number of them are equals to the number of pitches we need.(Only need to use them if the number of pitches we need is larger than the output pins we can provide, which means we need to use logic circuit elements like gate and mux to make One-to-many control). MOSFET or IGBT are considered as controllable switches, maybe consider using a PCB board to make the whole circuit, since the number of them is quite large and other capacitors and resistors are also needed to protect the whole circuit. (figure 6 is the PCB that we brought to connect microcontroller with the computer, which is broght from targeted company, figure is the circuit schematic of microcontroller in figure 5)</p>	<p>Y</p>

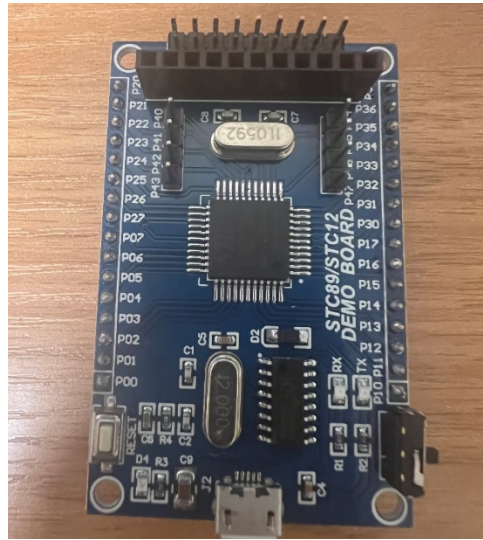


Figure 5 Microcontroller system board

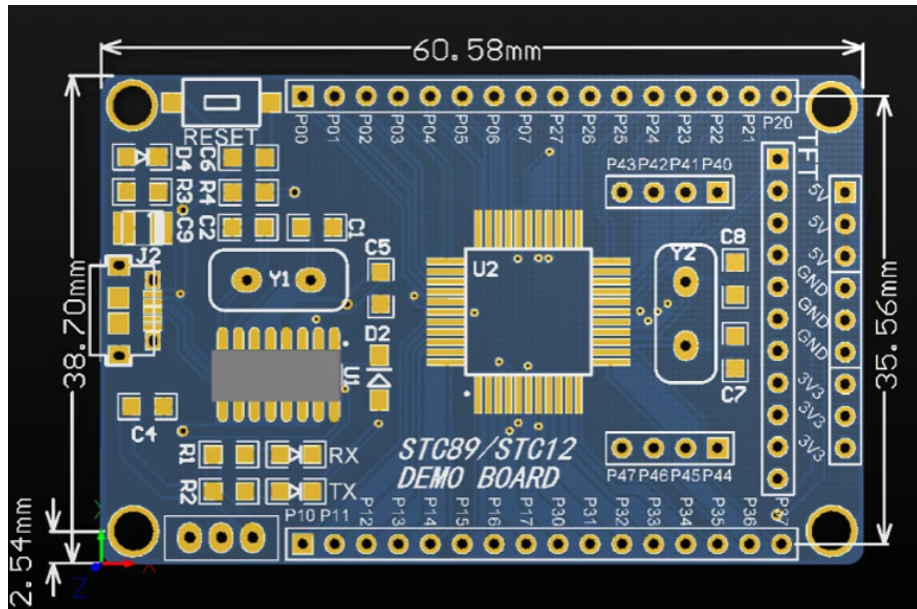


Figure 6 PCB layout for microcontroller

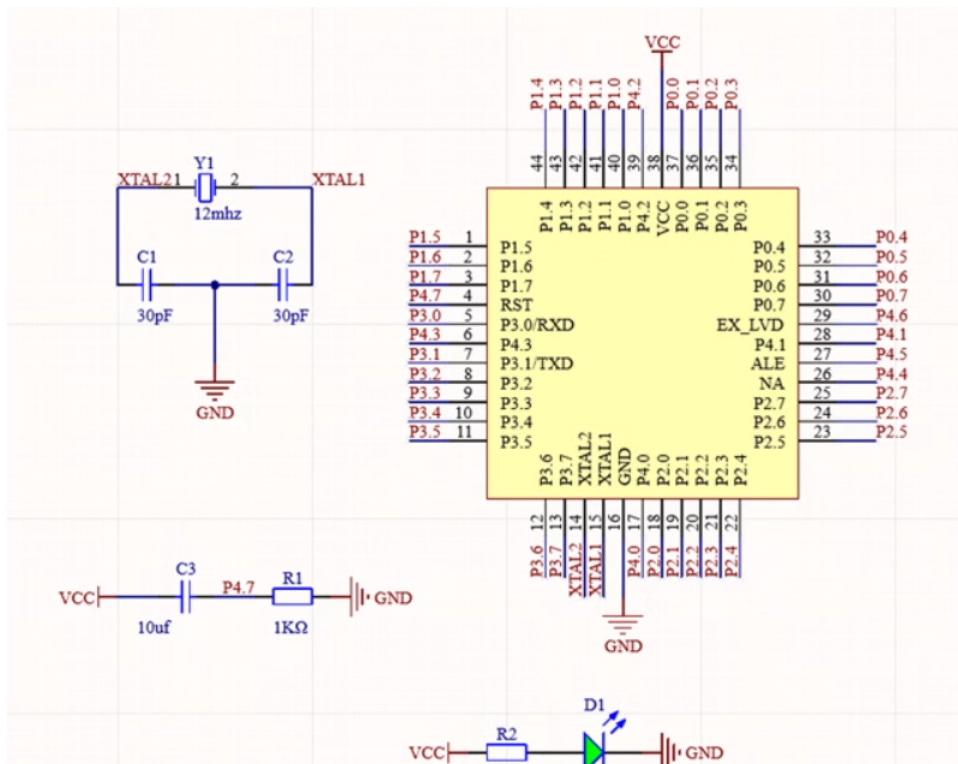


Figure 7 Circuit schematic for microcontroller

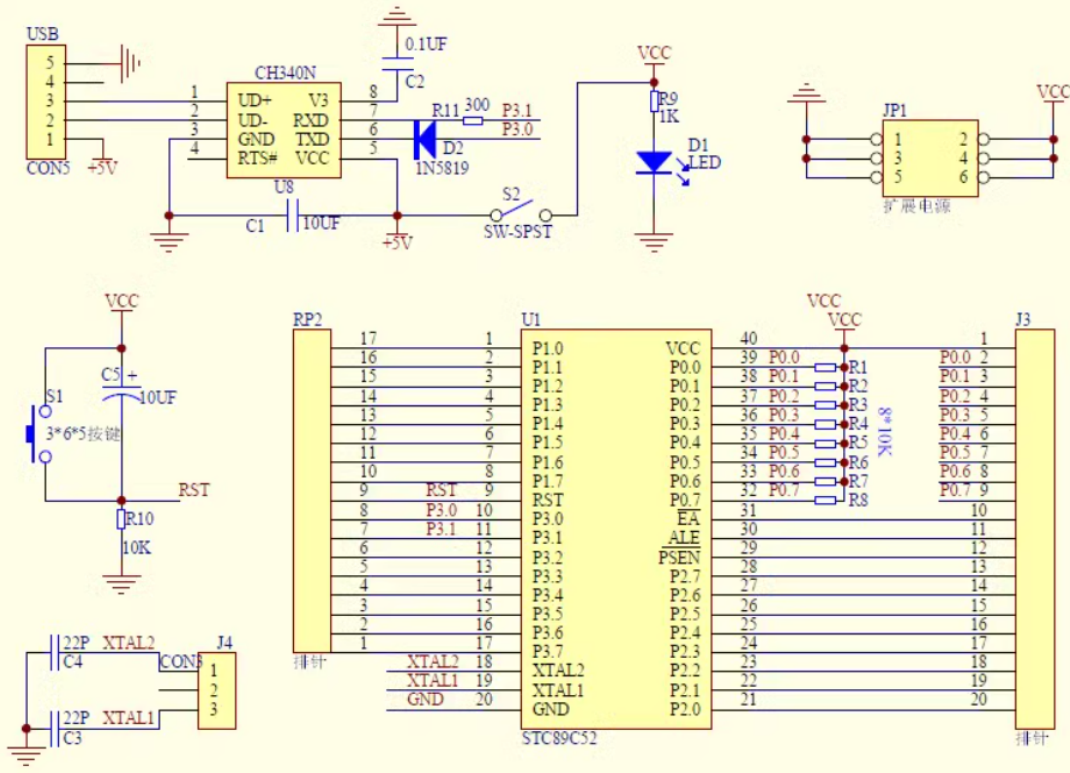


Figure 8 Circuit schematic for whole circuit

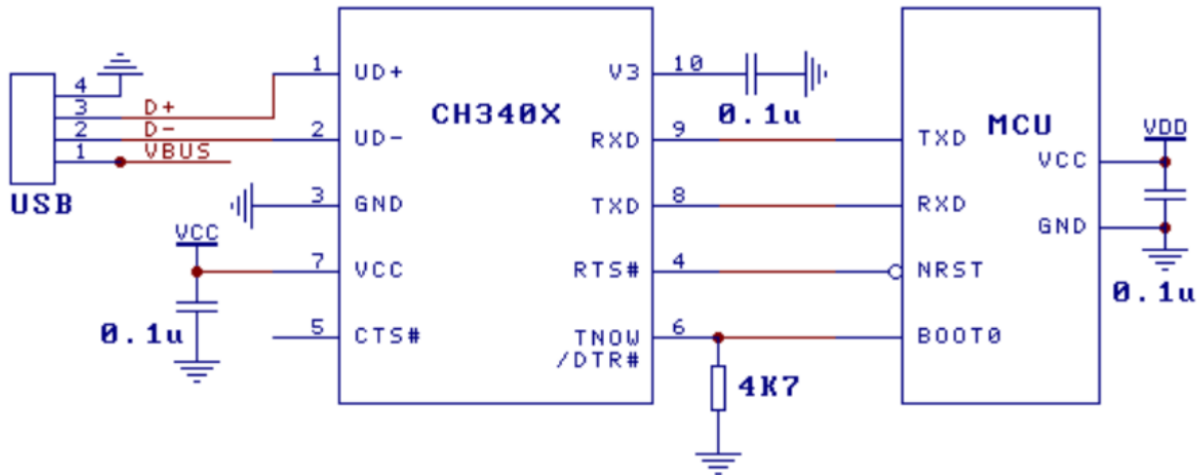


Figure 9 Data download circuit

2.3.3 Mechanical System

The main structure consists of a frame, a driving motor, and drumsticks. For aesthetic and practical considerations, the motor will be positioned between two rows of water cups, with one motor controlling two drumsticks, aiming to reduce the number of motors and the weight of the structure.

The precise emulation of human percussive actions using wooden sticks to strike the chimes constitutes the crux of the entire mechanical structure. To achieve this functionality, my focus is divided into two primary aspects: optimizing the trajectory and velocity of the wooden sticks.

Firstly, the essence of percussive strikes lies in the necessity for the velocity of the stick to increase as it approaches the target, followed by a gradual deceleration upon impact. Given the uniform rotational motion of the motor, I prioritize the utilization of a four-bar linkage mechanism[5][6][7] to accommodate this requirement effectively.

Secondly, in pursuit of identifying the optimal motion trajectory, I employ simulation tools to visualize the movement paths, facilitating the determination of the ideal relationships between the various linkages. This meticulous approach ensures the attainment of precise and efficient percussive actions, thereby aligning with the overarching objectives of the project. The optimal combination of four-bar linkage is shown as below, with the ratio of ground link, input link, output link and floating link is 10:5:16:20.

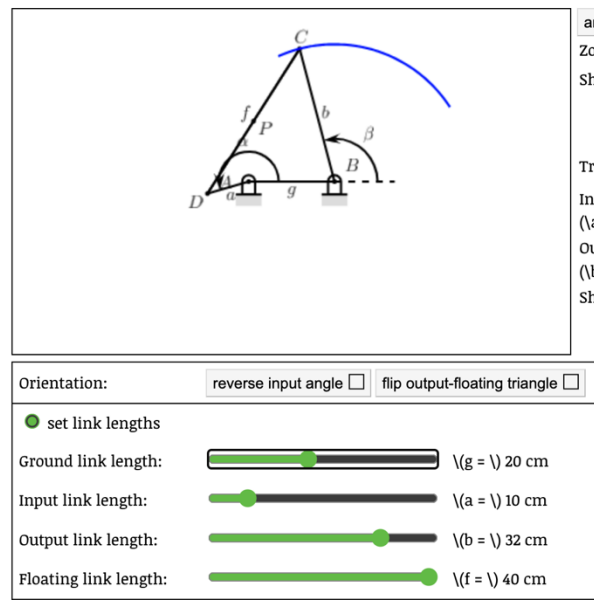


Figure 10 Simulation of Four-bar Linkage

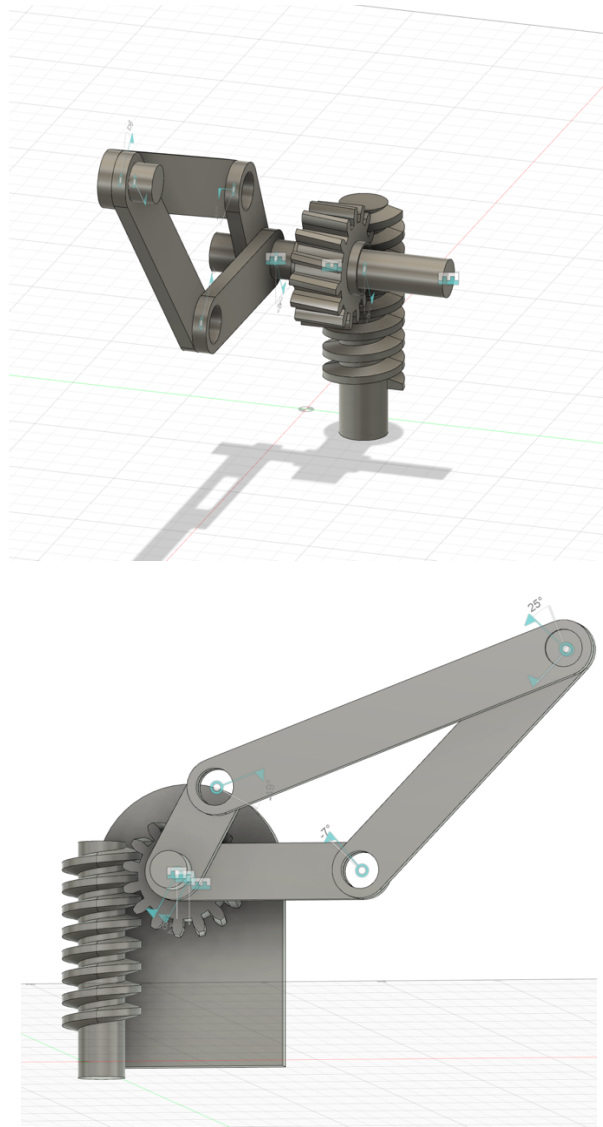


Figure 11 Screenshot of CAD Model

For the percussion structure, we will employ small-sized direct current (DC) low-speed motors for driving. The speed is around 90 rpm. Power Subsystem should contain relays, pulse control instrument and PLC, and be able to supply the rest of the system continuously at around 6V.

To ensure crisp and stable tapping sounds, we intend to utilize wooden rods as the material for the drumsticks, driven by a worm gear mechanism. The hammer should provide at least 5 N·m exciting force. The drumstick should be well controlled after the first strike to avoid redundant strike. We will control the signal time-step or the power supply time-step to limit the phase change of the stick.

Additionally, we utilize the siphon effect to add an automatic water filling function to the water cups.

Table 4 Requirement and Verification of Mechanical system

Requirement	Verification	Verification Status
The automated infusion of water into a cup ceases upon reaching the specified height.	Procedure: The visual observation is conducted to ascertain whether the automatic water dispensing function halts precisely at the calibrated line. Subsequently, software designed for pitch detection is employed to assess the accuracy of the pitch emitted by the water-filled vessel upon reaching the prescribed level.	/
Whether the capacity to accurately simulate manual tapping actions is achievable.	Procedure: Initiate the motor and observe the trajectory of mechanical components. Utilize a glass cup to evaluate the efficacy of the tapping effect.	/

2.4 Tolerance Analysis

At the moment, based on the materials we have purchased, the chimes themselves do not have the intonation we would expect, and to a certain extent they are not even playable in their entirety; the pitches the twelve bells can produce are not fully recognizable by professional software and are in a range of fluctuations that are not fully under control.

The rest of the errors may arise in the following parts:

1. Error in extracting melody from the song.

Suppose vector f is the calculated frequency sequence and F is the ground truth sequence. Suppose v and V are the voicing indicator vector, where $v_i = 1$ means frame i has a melody frequency f_i and $v_i = 0$ means no melody detected in frame i . Similar for F and V .

An Overall Accuracy (OA) measures the ratio of frames that be correctly denoted pitches as [3]

$$OA = \frac{1}{L} \sum_i V_i \tau[\xi(f_i) - \xi(F_i)] + \bar{V}_i \bar{v}_i$$

Where τ is a threshold function defined as

$$\tau[a] = \begin{cases} 1 & \text{if } |a| < const \\ 0 & \text{if } |a| > const \end{cases}$$

ξ describes frequency with a reference frequency.

Then the error can be calculated as

$$Err = 1 - OA$$

2. Delay in hitting the hammer due to variations in signal transmission.
3. Loosening may occur, necessitating regular maintenance, due to frequent tapping and the connections between different materials.
4. For the microcontroller, 12M crystal baud rate is up to 2400, 9600 case will have 7.8% error, so it will produce garbled code, and 2400 baud rate in the case of the error is 0.16%.

3. Cost and schedule

3.1 Cost analysis

Table 5 Cost Analysis of Labor

Name	Hourly Rate	Hours	Total	Total x 2.5
Tianle Wu	\$37	10weeks * 10h/w	\$3700	\$9250
Luting Lei	\$37	10weeks * 10h/w	\$3700	\$9250
Siyi Li	\$37	10weeks * 10h/w	\$3700	\$9250
XiaoXiao Pan	\$37	10weeks * 10h/w	\$3700	\$9250
Total			\$14800	\$37000

*We use an average EE engineer salary as an hourly rate.

Table 6 Cost Analysis of Materials

Part	Cost (prototype)	Cost (bulk)
Microcontroller system	¥ 18	¥ 18
Traditional Chinese Chimes	¥ 88	¥ 88
Cups	¥ 48	¥ 16 per 6 cups
Pneumatic hammer	¥ 10	¥ 10
fastening	¥ 200	¥ 200
Motor and	¥360	¥30 per motor set
Wood stick	¥3.33	¥3.33
acrylic plate	¥72	¥24 per (500*500*3mm)
battery	¥40.89	¥40.89 for 20 pieces

3.2 Schedule

Table 7 Schedule

Time\group task	Luting Lei	Tianle Wu	Siyi Li	Xiaoxiao Pan
Week 6	Finish the pipeline to generate signal for microcontroller, develop algorithm of monophonic as baseline		Testing on whether the Chimes can be used to perform, otherwise using some other objects like cups with water to replace.	

Week 7	Continuously develop algorithms of more complicated melody extraction		Adjusting the instrument we decide to work on, including the intonation and the force that needed to strike.	
Week 4/15	Optimize algorithms and research on melody recompose;	generating required rhythm and microcontroller control code	Got new microcontroller and working on the printed circuit board of the brought one.	Create primary model with CAD and manufacture the prototype
Mid-test	Testing on doing simple melody on the cups controlled by electrical part			
Week 4/22	Running on database, adjusting parameters, increasing the accuracy of the algorithm	Connecting control code with microcontroller	Coding on the new microcontroller and get the initialized output voltage control. And then work on the connection between the data file and the output signal.	Adjusting the prototype. Add the auto-injection function
Week 4/29	Combining the complete two parts for functions: recognition + performance. Doing test to make sure the system can work.			
Week 5/6	Adjust details for demo, add little chord or recombination to make the melody more pleasant	Test the control code transmission in more advanced functions	Adjustment on signal control.	Final adjustment on prototype
Week 5/13	Final demo			

4. Ethics and Safety

The IEEE Code of Ethics emphasizes the importance of protecting the public, so we will ensure the entire cups and the mechanical parts of its striking are capable of safe operation. However, there are still the following points worth noting:

1. The overall mechanical part of the false placed on the horizontal surface to prevent accidental fall damage, affecting safety.
2. The whole mechanical structure should be placed in a place that is not easily touched by children, to prevent children from accidentally ingesting or being injured.
3. It may not be suitable for people with impaired hearing to use it, and some of the chimes are too high-pitched, which may cause auditory impacts to some groups of people. When we change to cups with water, we can control the pitch to around C3-C4, not too high for people to perform.
4. The primary ethical concern would be ensuring the safety of individuals interacting with the structure. If the striking mechanism is too forceful or unpredictable, it could cause injury to users or bystanders. Improper tapping technique and force may cause the glass cups to topple, potentially resulting in dangerous glass shards and injury incidents.
5. Consideration should be given to potential malfunctions of the striking mechanism. For instance, if it is used inappropriately or lock itself, it could lead to unintended damage or harm.

References

- [1] IEEE. (2024). IEEE Code of Ethics. Available at:
<https://www.ieee.org/about/corporate/governance/p7-8.html>. Accessed March 2024.
- [2] alldatasheet.com. (n.d.). *STC89C52 Datasheet, PDF*. Alldatasheet. Available at
<https://www.alldatasheet.com/view.jsp?Searchword=STC89C52>
- [3] J. Smith, and A. Johnson, "Melody Extraction from Music: A Comprehensive Study." In *Advances in Music Information Retrieval*, edited by M. Brown, 2nd ed. Springer, 2020, pp. 141-155. [Online]. Available: https://link.springer.com/chapter/10.1007/978-1-234-56789-0_5. Accessed: April 2024.
- [4] C. Li, Y. Liang, H. Li, and L. Tian, "Main melody extraction from polyphonic music based on frequency amplitude and multi-octave relation," *Computers & Electrical Engineering*, vol. 90, p. 106985, Mar. 2021, doi: <https://doi.org/10.1016/j.compeleceng.2021.106985>.
- [5] Sanjib Kumar Acharyya; M. Mandal; "Performance of EAs for Four-bar Linkage Synthesis", *MECHANISM AND MACHINE THEORY*, 2009.
- [6] Guowu Wei; Yao Chen; Jian S. Dai; "Synthesis, Mobility, and Multifurcation of Deployable Polyhedral Mechanisms With Radially Reciprocating Motion", *JOURNAL OF MECHANICAL DESIGN*, 2014.
- [7] J. A. Hrenes and G. L. Nelson, *Analysis of the Four-Bar Linkage*. MIT Press (MA), 1951.
- [8] Chrisl "USB to Serial Chip CH340" available at:
<https://blog.csdn.net/u010262704/article/details/128656165>
- [9] 基于 51 单片机的可调频率幅值的波形信号发生器设计-电子发烧友网. (n.d.). available:
<https://www.elecfans.com/d/2256216.html>
- [10] IOsetting "51 microcontroller STC89C52 Multiple PWM pulse width modulation outputs", available at : <https://blog.csdn.net/michaelchain/article/details/119627788>