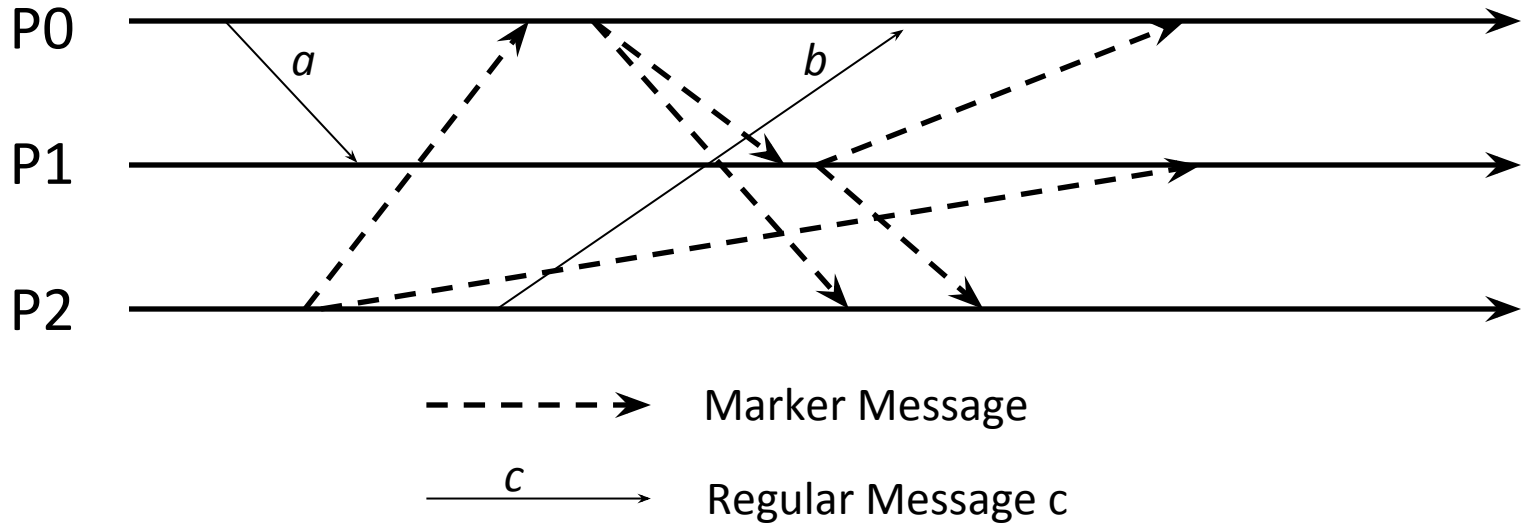


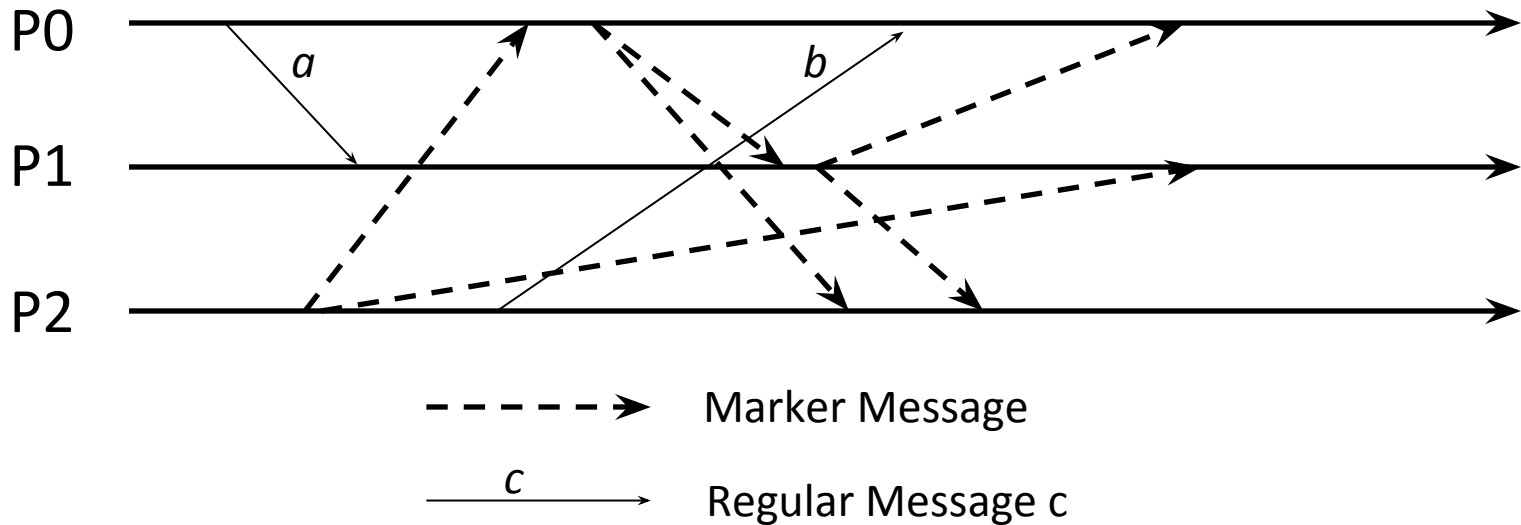
I. Chandy-Lamport Global Snapshots Algorithm

- Mark the entire global snapshot collected.



I. Chandy-Lamport Global Snapshots Algorithm

- Mark the entire global snapshot collected.



P0: S(a)

P1: R(a)

P2: {}

C01: {}

C02: {}

C10: {}

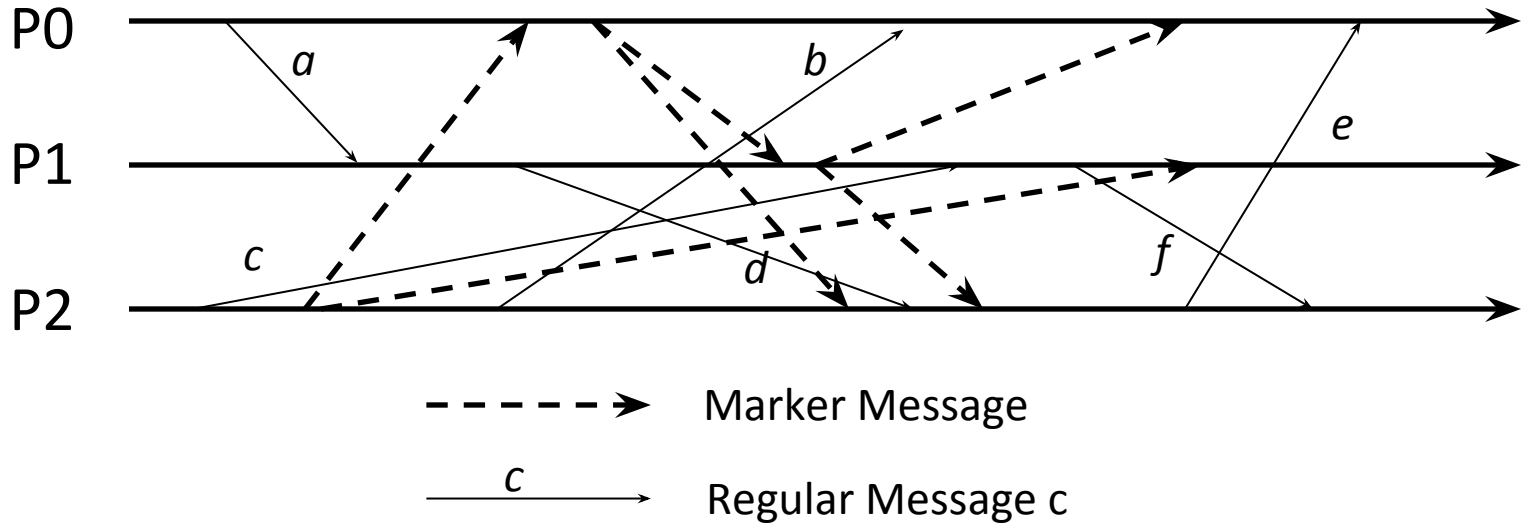
C12: {}

C20: {}

C21: {}

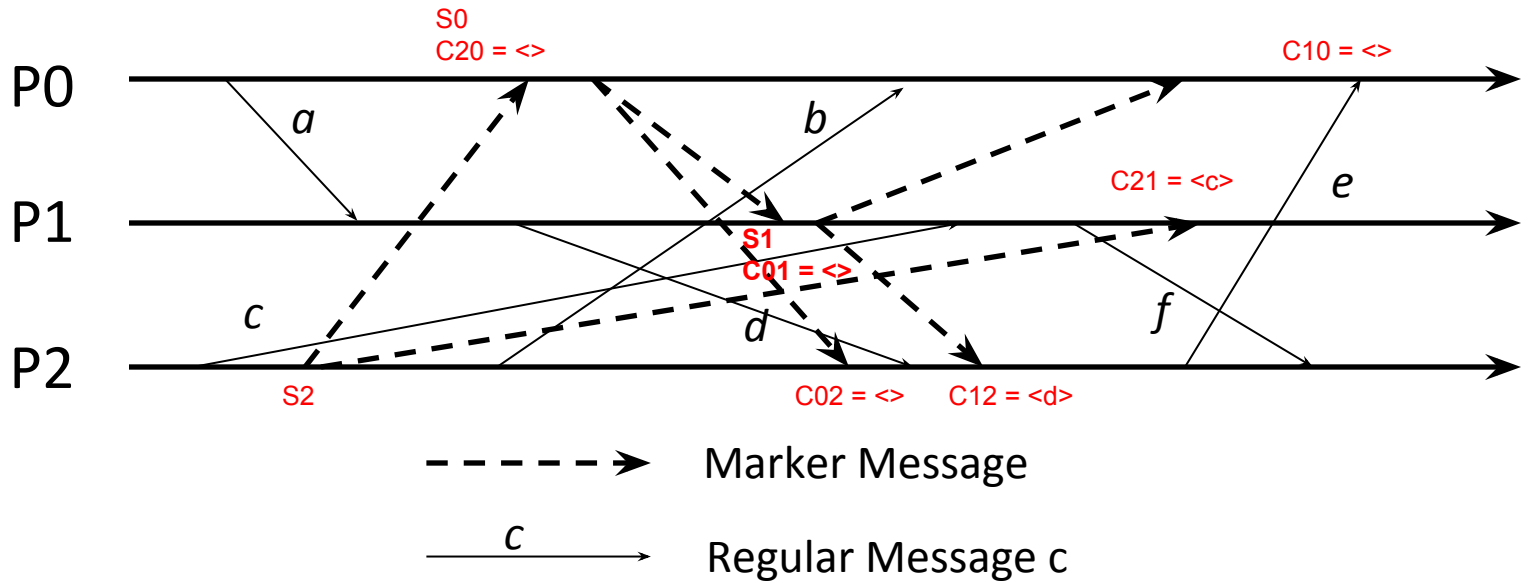
II. Chandy-Lamport Global Snapshots Algorithm

- Mark the entire global snapshot collected.



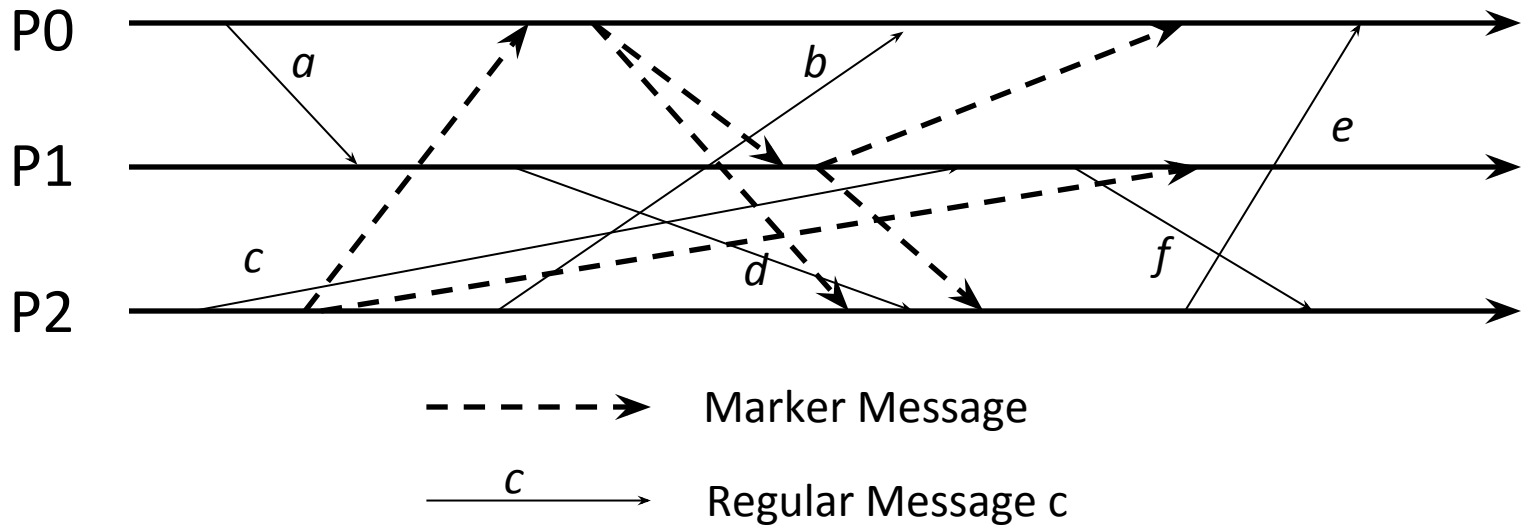
II. Chandy-Lamport Global Snapshots Algorithm

- Mark the entire global snapshot collected.

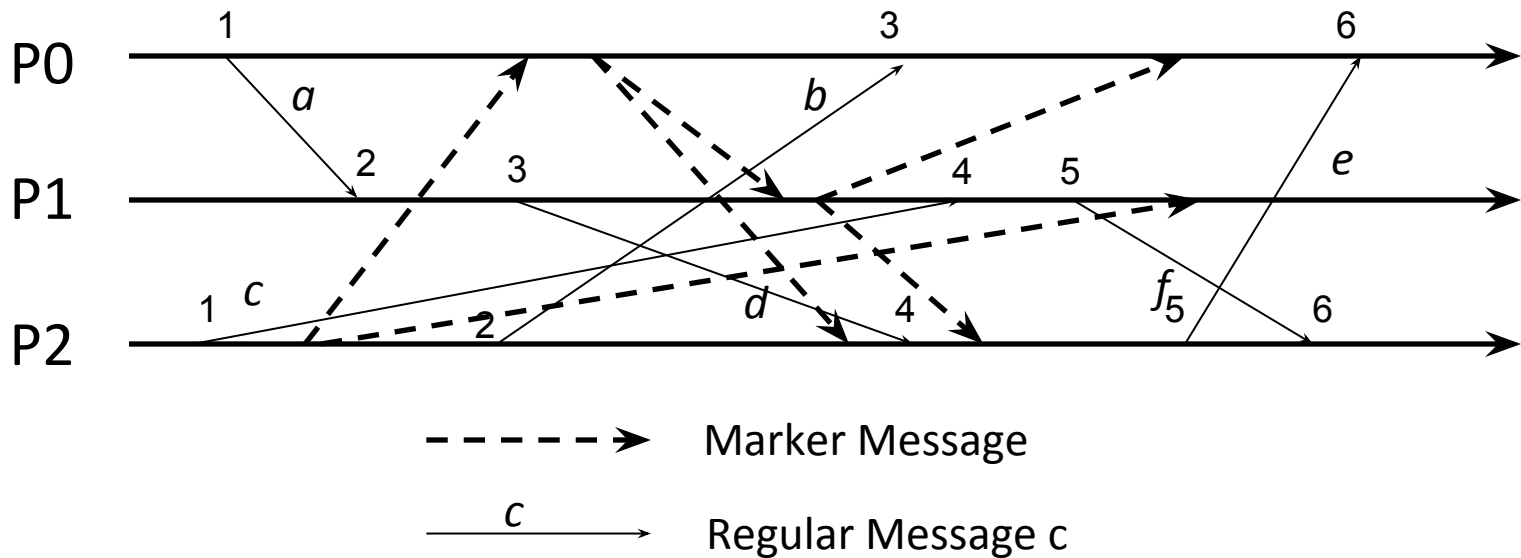


P0: S(a)
 P1: S(d)
 P2: S(c)
 C01: {}
 C02: {}
 C10: {}
 C12: {d}
 C20: {}
 C21: {c}

III. Mark all Lamport timestamps for application messages on this figure for all events.
All Lamport timestamps start from zero.

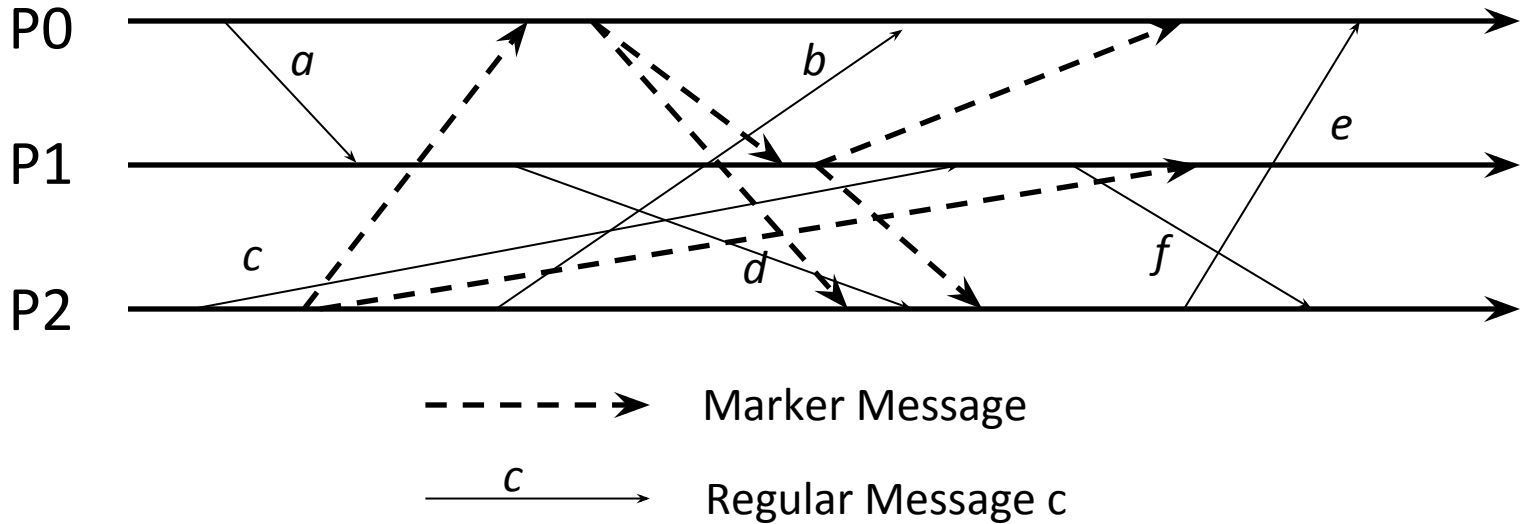


III. Mark all Lamport timestamps for application messages on this figure for all events.
 All Lamport timestamps start from zero.



- P0: S(a)
- P1: S(d)
- P2: S(c)
- C01: {}
- C02: {}
- C10: {}
- C12: {d}
- C20: {}
- C21: {c}

IV. Mark all vector timestamps for application messages on this figure for all events.
All vector timestamps start from zeroes.



IV. Mark all vector timestamps for application messages on this figure for all events.
 All vector timestamps start from zeroes.

