



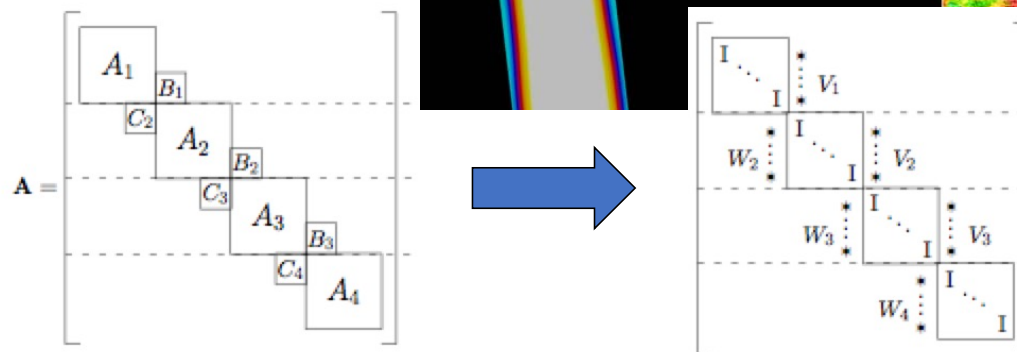
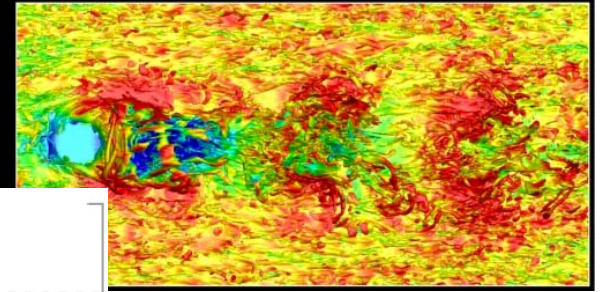
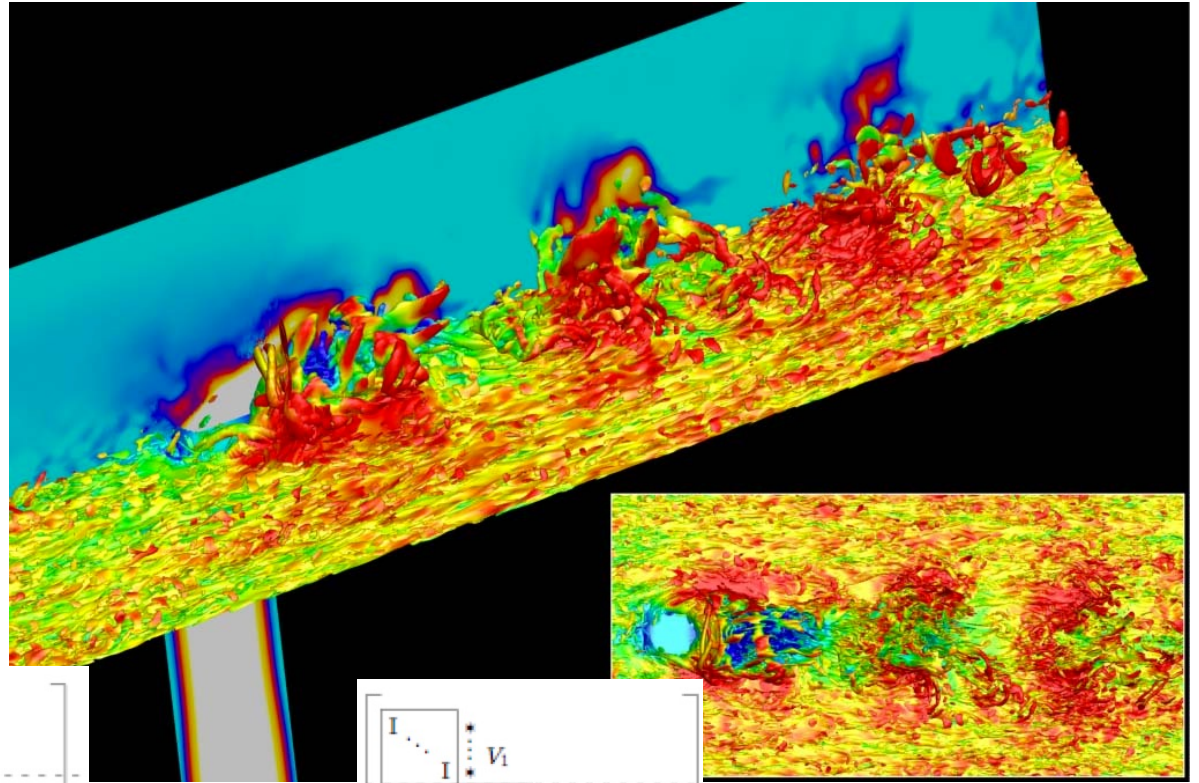
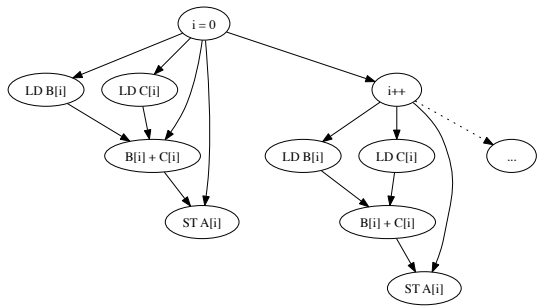
CS 225

Data Structures

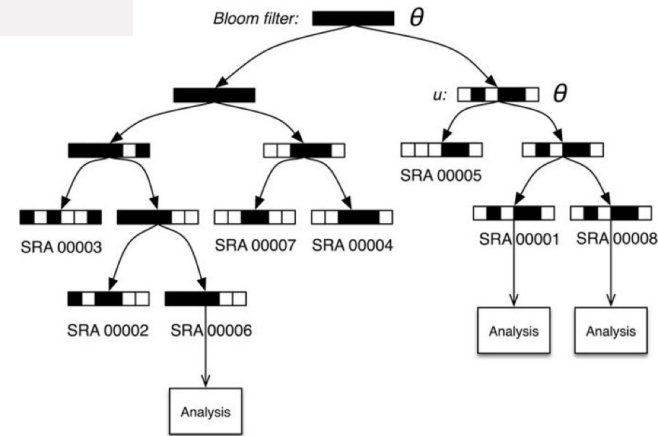
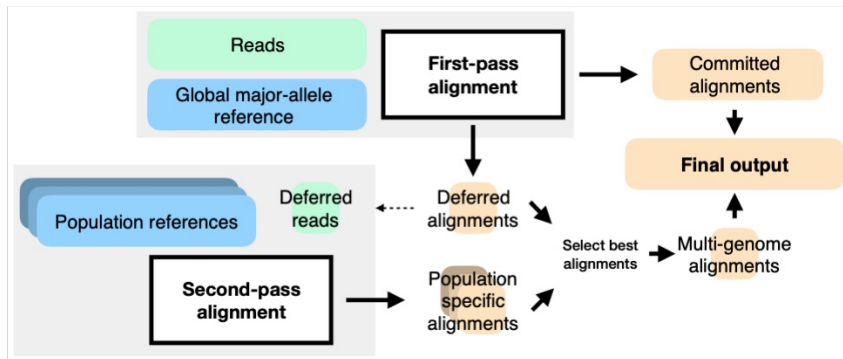
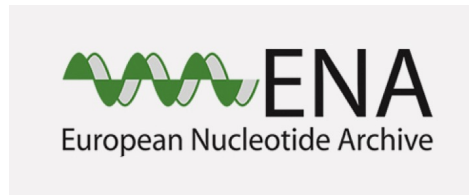
August 22 – Introduction

G Carl Evans & Brad Solomon

G Carl Evans



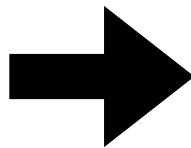
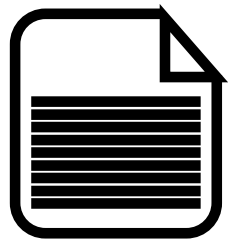
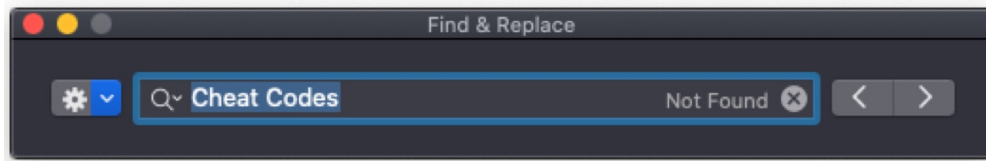
Brad Solomon



Fast search of thousands of short read sequencing experiments. Brad Solomon and Carl Kingsford. *Nature Biotech* 2016.

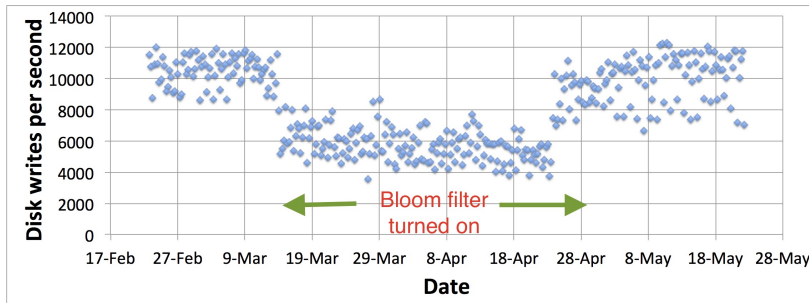
Reducing reference bias using multiple population reference genomes. Chen et al. *Genome Biology* 2021

CS 199-225: String Algorithms and Data Structures



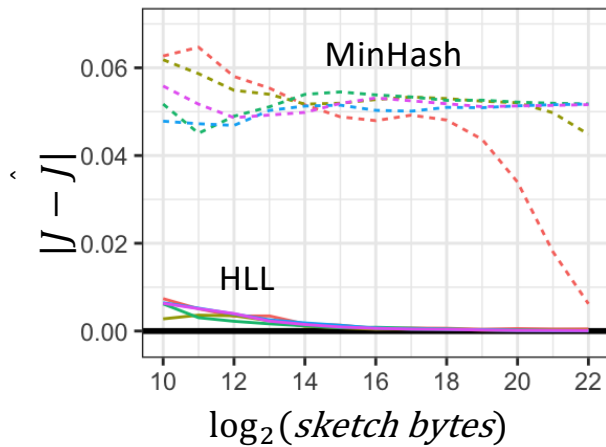
```
GATCACAGGTCTATCACCTATTAACCACTCACGGGAGCTCTCCATGCATTTGGTATTTT
CGTCTGGGGGGTATGCACGCGATAGCATTGCGAGACGCTGGAGCCGGAGCACCCATGTC
GCAGTATCTGTCTTTGATTCTGCCTCATCTATTATTTATCGCACCTACGTTCAATATT
ACAGGCGAACATACTTACTAAAGTGTGTTAATTAATTAATGCTTGTAGGACATAATAATA
ACAATTGAATGCTGCACAGCCACTTTCCACACAGACATCATAACAAAAATTTCCACCA
AACCCCCCTCCCCGCTTCTGGCCACAGCACTTAAACACATCTCTGCCAAACCCAAAA
ACAAAGAACCCCTAACACCAGCCTAACAGATTTCAAATTTTATCTTTTGGCGGTATGCAC
TTTTAACAGTCACCCCCCACTAACACATTAATTTCCCTCCCACTCCCATACTACTAAT
CTCATCAATAACAACCCCGCCATCCTACCCAGCACACACACCCGCTGCTAACCCATA
CCCCGAACCAACCAACCCCAAGACACCCCCACAGTTTATGTAGCTTACCTCCTCAAA
GCAATACACTGACCCGCTCAAACCTCCTGGATTTTGGATCCACCCAGCGCCTTGGCTAAA
CTAGCCTTTCTATTAGCTCTTAGTAAGATTACACATGCAAGCATCCCCGTTCCAGTGAGT
TCACCTCTAAATCACCACGATCAAAGGAACAAGCATCAAGCAGCAATGCAGCTC
AAAACGCTTAGCCTAGCCACACCCCCACGGGAAACAGCAGTGAATACCTTTAGCAATAA
ACGAAAGTTTAACTAAGCTATACTAACCCCAAGGTTGGTCAATTTCAGCCAGCCACCGC
GGTCACACGATTAACCCAAGTCAATAGAAGTCGGCGTAAAGAGTGTAGATCACCCCC
TCCCAATAAAGCTAAAACCTACCTGAGTTTAAAAAACTCCAGTTGACAAAATAGAC
TACGAAAGTGGCTTTAACATATCTGAACACCAATAGCTAAGACCCAACTGGGATTAGA
TACCCCACTATGCTTAGCCCTAAACCTCAAAGTTAAATCAACAAAACTGCTCGCCAGAA
CACTACGAGCCACAGCTTAAAACCTCAAAGGACTGGCGGTGCTTCATCTCCCTCTAGAGG
AGCCTGTTCTGTAATCGATAAACCCCGATCAACTCACCACCTCTACAGCCTATATA
CCGCCATCTTCAGCAAACCTGATGAAGGTACAAGTAAAGGCAACACACGTAAG
ACGTTAGGTCAAGGTGTAGCCCATGAGGTGGCAAGAAATGGGCTACATCAACCCAG
AAAACACGATAGCCCTTATGAACTTAAAGGTGGAAGGTGGATTAGCACTAAG
AGTAGAGTGCTTAGTTGAACAGGGCCCTGAAGCGGTACACACCCGCCGTCACCTC
AAGTACTTCAAAGGACATTTAACTAAAACCCCTACGCATTTATATAGAGGAGT
CGTAACCTCAAACCTCCTGCCTTGGTGATCCACCCGCTTGGCTACCTGCATAAAG
AAGCACCAACTTACACTTAGGAGATTTCAACTTAACTTGACCGCTCTGAGCTAAACCTA
GCCCAAAACCACTCCACCTTACTACCAGACAACCTTAGCCAAACCATTTACCAATAA
```

CS 199-225: String Algorithms and Data Structures

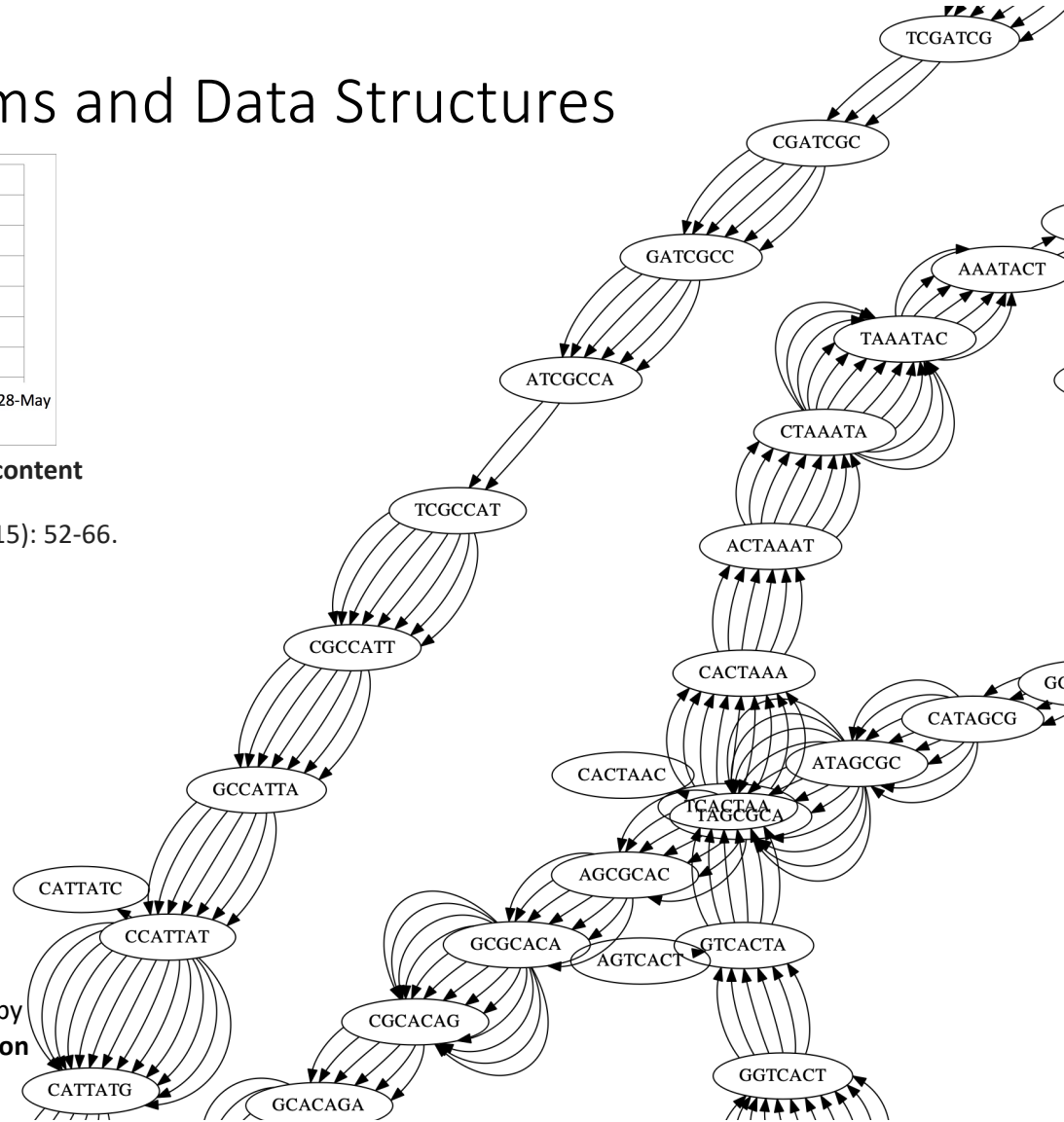


Maggs, Bruce M., and Ramesh K. Sitaraman. **Algorithmic nuggets in content**

delivery. *ACM SIGCOMM Computer Communication Review* 45.3 (2015): 52-66.



Ondov B, Starrett G, Sappington A, Kostic A, Koren S, Buck CB, Phillippy AM. **Mash Screen: high-throughput sequence containment estimation for genome discovery.** *Genome Biol* 20, 232 (2019)





CS 199-225: String Algorithms and Data Structures

Course Schedule: Monday 5:00 — 5:50 PM

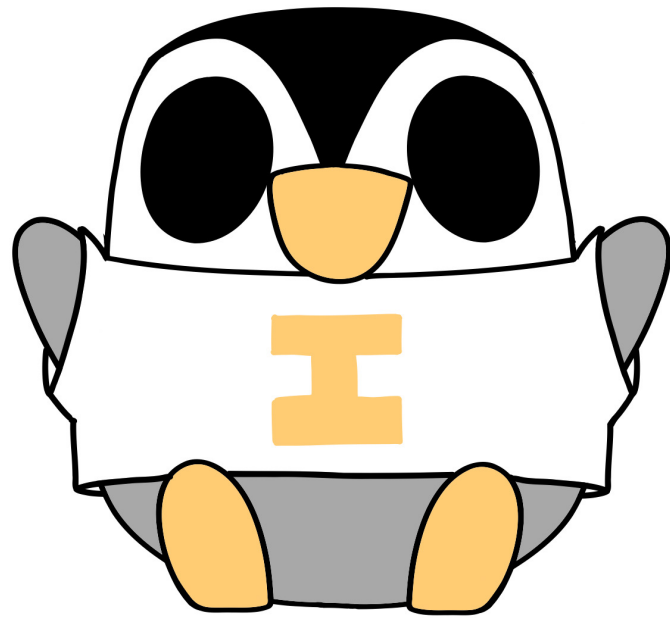
Online only lecture

First class: January 24th

<https://courses.engr.illinois.edu/cs225/sp2022/pages/honors.html>

Thierry
Ramais





CS225 STAFF



How to contact us?

- Admin Email

cs225admin@lists.cs.illinois.edu

- Discord

<https://discord.gg/YuEwhnR>

Do not DM Staff on Discord!



ECE 220

CS 128

CS 225

CS 173

MATH 213



Everything about CS 225

<https://courses.engr.illinois.edu/cs225/>

Information on:

Staff

Communications

Lab Sections

MPs

Exams

Grading

Academic Integrity



Grading Notes

| Points | Grade | Points | Grade | Points | Grade |
|-------------------|-------|-------------------|-------|--------------|-------|
| $[930, \infty)^*$ | A+ | $[930, \infty)^*$ | A | $[900, 930)$ | A- |
| $[870, 900)$ | B+ | $[830, 870)$ | B | $[800, 830)$ | B- |
| $[770, 800)$ | C+ | $[730, 770)$ | C | $[700, 730)$ | C- |
| $[670, 700)$ | D+ | $[630, 670)$ | D | $[600, 630)$ | D- |
| | | $(600, 0]$ | F | | |

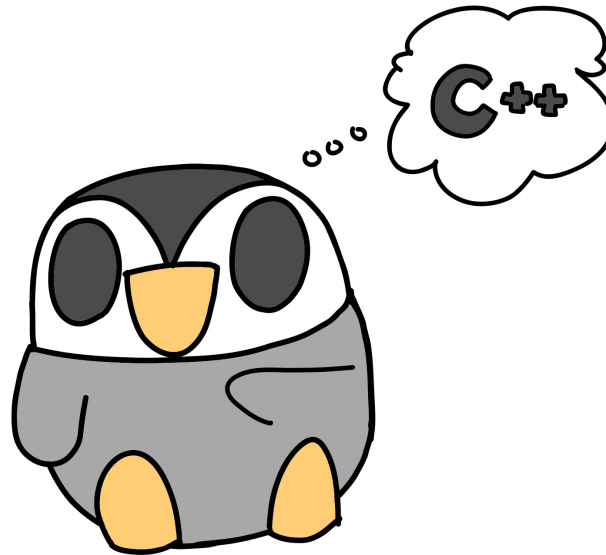
* To get an A+ you need the score of 930 but you also need to have your final project or for some other work in this course to be seen as exceptional by course staff.



What is this course about?



What about C++



Lectures from Previous Semesters Covering C++ Available Here

https://mediaspace.illinois.edu/playlist/dedicated/177553201/1_s10ctiib/1_z2cz05fi

Open Lab This Week

This week lab are open office hours to help you get your machine setup and can be reached at this link.

