

CS 100

# Who are we?

- Margaret Fleck
  - Teaching Professor in Computer Science
  - Also teaches Artificial Intelligence (CS 440)
  - Has recently taught Discrete Mathematics (CS 173)
  - Director of Undergraduate Programs in Computer Science
- Heather Zike
  - Senior Undergraduate Academic Advisor, Computer Science
- Daniel Moon
  - Graduate student in computer science
  - Teaching Assistant (aka TA)

# Who are you?

- From different regions or countries
- Different amounts of preparation
  - In CS 124
  - In CS 128 and/or CS 173
  - More advanced
- Different CS majors (CS Engineering, CS+Linguistics, ...)
- Don't let the other students worry you
  - Find your own path.
  - You'll be fine

# Topics for this term in CS 100

- Resources and organizations in the CS department
- Navigating academic requirements
- Academic integrity
- Safety, health, and wellness
- CS research areas and research opportunities
- Study abroad and in Chicago
- Finding internships and jobs after graduation
- Lots of other useful topics
- **Guest speakers!**

# Coming up soon

- Deadline for adding courses
  - 10th day of classes aka next Friday, Sept 1st
- Labor Day holiday
  - Monday Sept 4th
- Schedule not working right? Talk to your advisor ASAP
- PURE Promoting Undergraduate Research <https://pure.engr.illinois.edu/>, deadline tonight 11:59pm
- Engineering Career Services Sample
- Afterhours (Corporate Connection)
  - <https://corporateconnection.cs.ece.illinois.edu/afterhours.html>
  - Monday 11 Sept, 4-7pm, Illini Union.

# Advisors

- CS undergraduate advising
  - <https://cs.illinois.edu/academics/undergraduate/undergraduate-advising>
  - Academic issues, also non-academic issues
- CS+X, Math+CS, Stat+CS
  - Also have an advisor in the other department
- CS Advising Piazza
  - <https://piazza.com/class/i69uo2ijxwm4ql/post/10843>
  - Named “CS Advising,” term is “other”

Have you found the web page?

<https://courses.engr.illinois.edu/cs100/fa2023/>

Have you read the syllabus?

Have you read the syllabi  
for your other courses?



# Important items in a syllabus

- When are assignments due?
- Policies about working with others on assignments
- When is attendance required (rather than just a good idea)?
- Dates of quizzes, midterm exams
  - Check for conflicts
- Key electronic resources (e.g. PrairieLearn)
- How to get help (e.g. office hours)

## Grading for this course

- Lecture attendance (4 drops)
- Homeworks (about weekly, 2 drops)
- Not difficult to get an A

# Moodle

- We'll be using moodle for
  - Attendance activities in class
  - Homeworks (due Friday evenings)
  - Gradebook
  - Discussion forum
- Go to <https://learn.illinois.edu/>

# Today's attendance activity

- No electronic device today? Give name to Heather at the end.
- Go to <https://learn.illinois.edu/> and click “NetID login”
- Registered very recently?
  - In “Course search” type “CS 100”
  - Self-enroll into the course using password “Hedwig”
- Click on “Who came to class Week 1?” and answer the questions
- Go to Grades to see that you did the activity

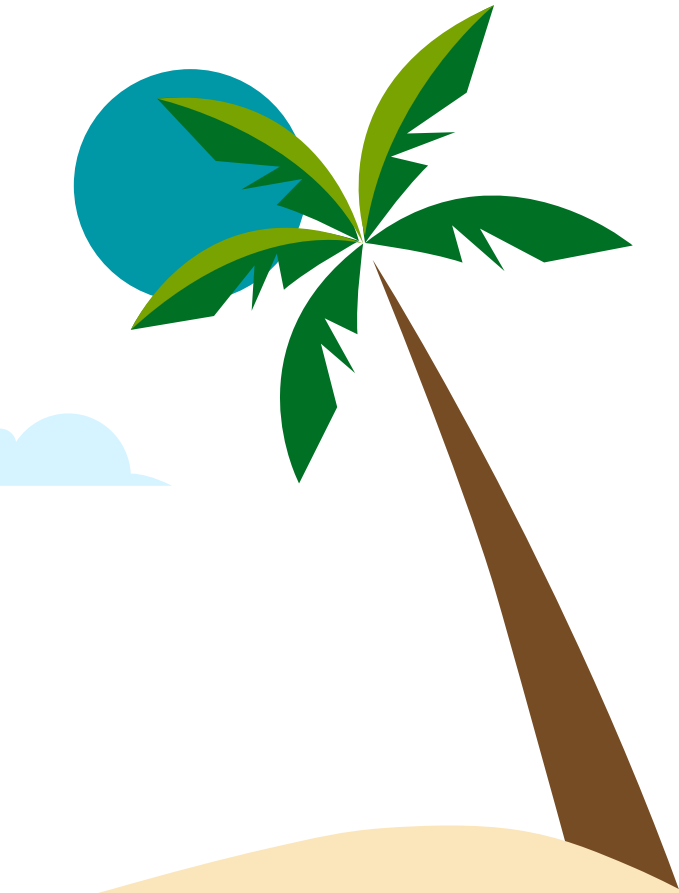
First moodle homework due next Friday



# Welcome to Sail

## 2023-24

Passionate about inspiring the  
next generation of CS at UIUC?



# What's Sail?

We are an entirely student-run organization that hosts an annual event for high-schoolers interested in CS and UIUC!

At Sail, you'll be able to:

- Get experience working with a team.
- Give back to the CS community!

# Staff application



Apply for our  
marketing,  
logistics, or  
design team!



# Accommodations

- DRES (disability services) <https://www.disability.illinois.edu/>
  - Can share with instructors as/when needed
  - DRES Testing center
- Conflicts e.g. Exams
  - [Religious conflict form](#)
  - Athletics, Marching Illini, etc
- Short illness (under 3 days)
  - No official letters, just tell instructor

# Supplemental (“honors”) work

- Supplements to CS 124, 128, 173, 225, 233, 341
- James Scholars
  - File HCLA
  - Get form and deadline from your college’s James Scholar office
  - Deadlines are about 4-6 weeks into the term
- Not a James scholar
  - Sign up for CS 199, choose section for your class
  - 0 hours, S/U grading

# Safety and Health (headline version)

- At night, choose routes that have many other people
- Safe walks <https://police.illinois.edu/services/safewalks-saferides/>
- Siren means **TORNADO**
  - Hide in basement (or interior room ground floor)
  - Unless it's 10am on the first Tuesday of the month
- Office of the Dean of Students
  - <https://odos.illinois.edu/>
  - Helps with many life problems
  - Emergency Dean for out-of-hours emergency help

# Tutoring resources

- Computer Science Tutoring Center
  - 0224 Siebel (lower level) and nearby areas
- Other departments
  - Chemistry Learning Center
    - <https://chemistry.illinois.edu/clc/tutoring-services>
  - Mathematics and Statistics Student Support Center
    - <https://publish.illinois.edu/mathstat-ssc/>
- CARE tutoring (Engineering College)
  - 4th floor of Grainger library
  - <https://care.grainger.illinois.edu/>